



# CAAC Design and Construction Update

2-15-2024



# 2024 Bond Projects

# Meyers Pool

City of Arvada / Jeffco / Apex  
OLC Designs – Saunders CMGC

Construction





# Meyers Pool

City of Arvada / Jeffco / Apex  
OLC Designs – Saunders CMGC

Construction





# Evergreen HS – Pump House H&M – Single Track

Construction



# Efficiency Future Ready Wheat Ridge HS Eidos – GTC

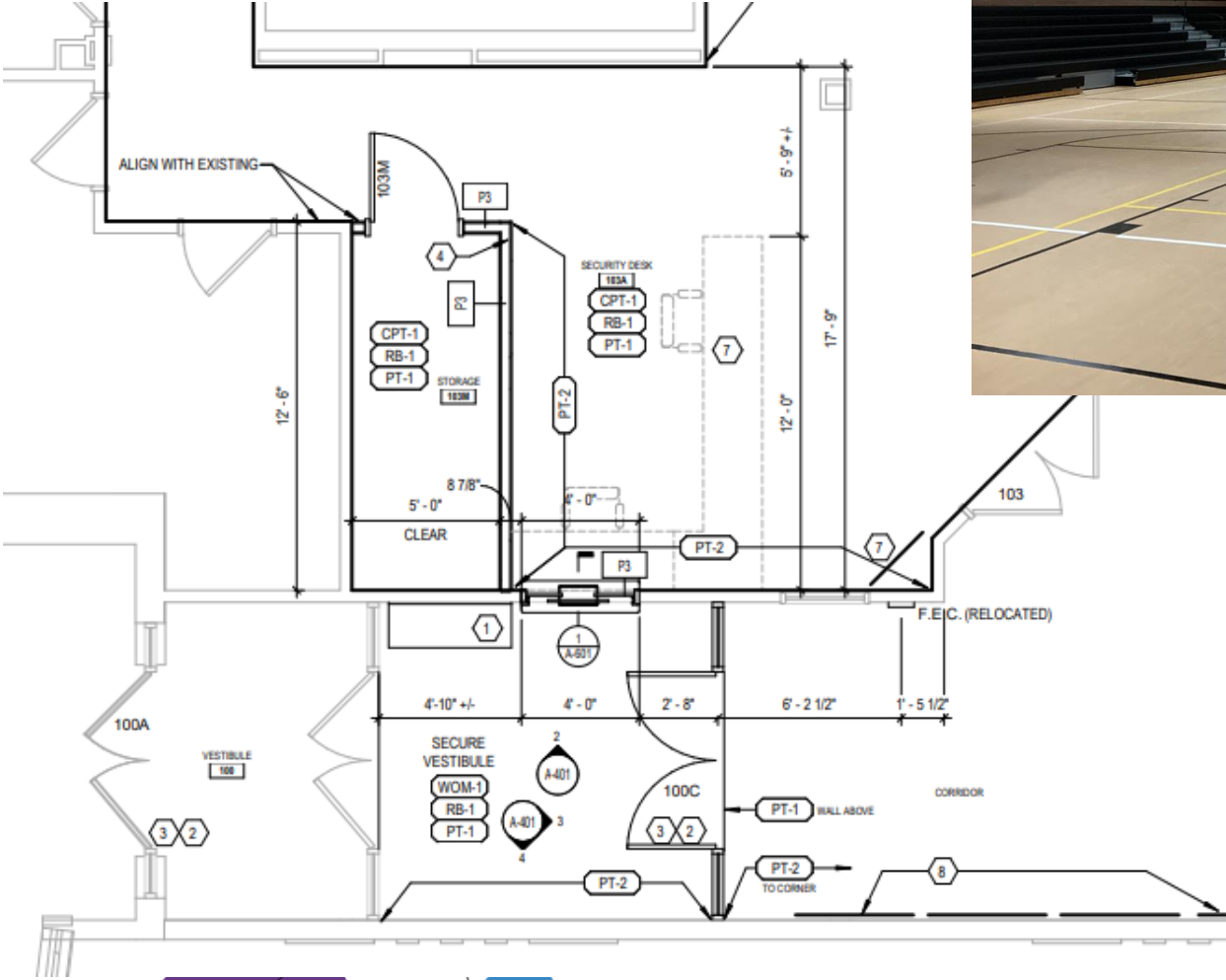
Construction





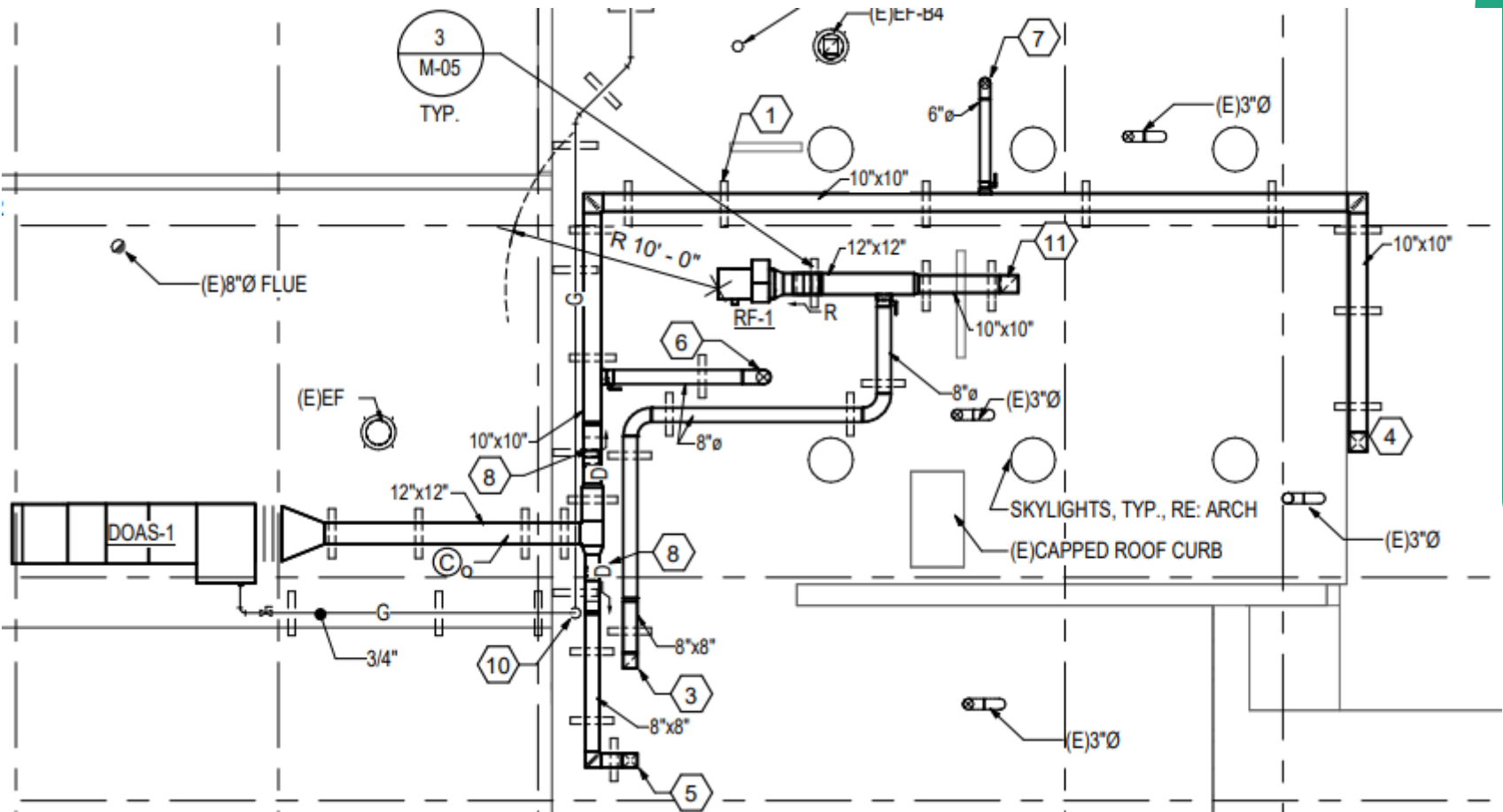
# Drake MS – Efficiency Future Ready MOA – Calahan

Construction



# Parmalee ES – Admin Ventilation OZ – Single Track

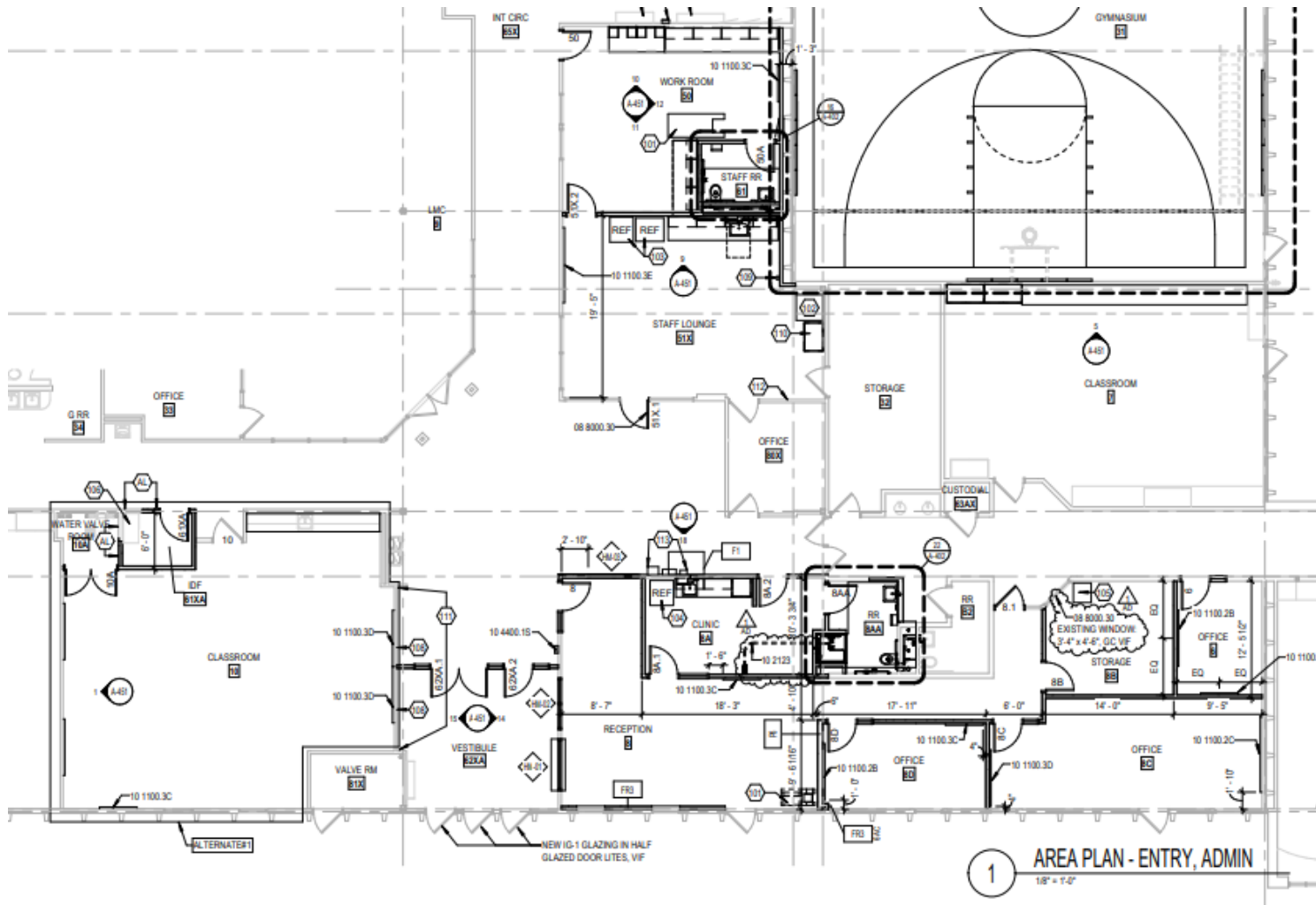
Construction  
Mobilized





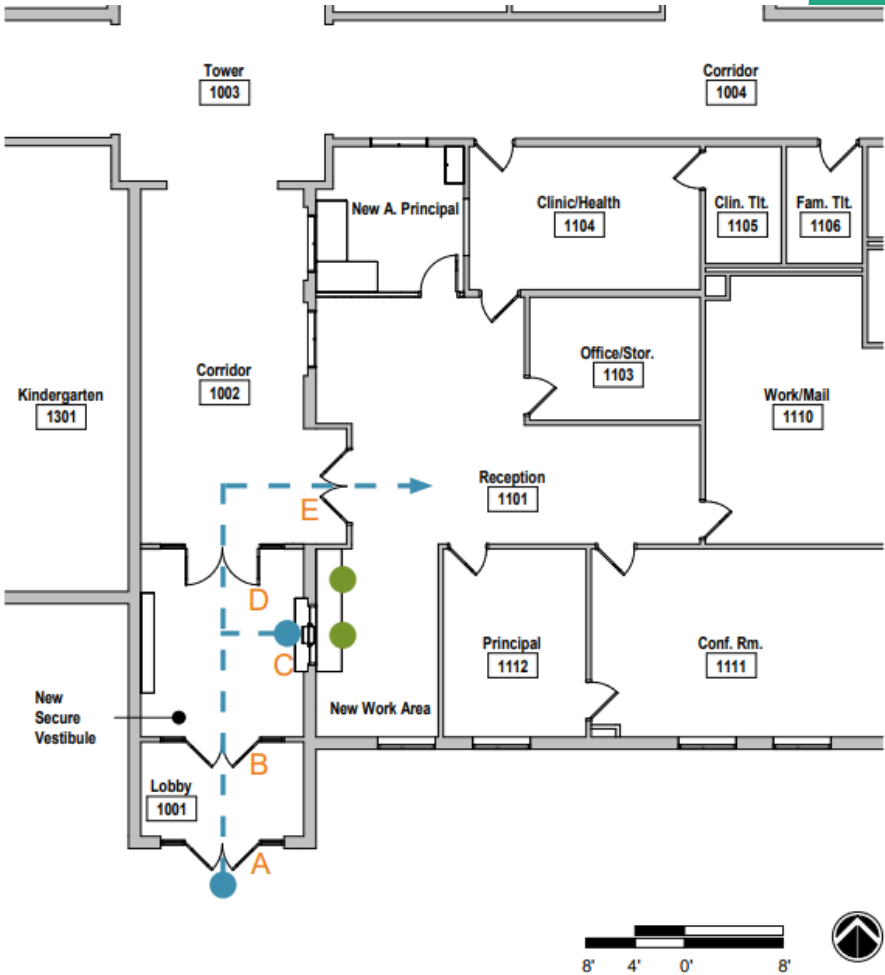
# Weber ES – Efficiency Future Ready MOA – Saunders

## Construction



## SCHEMATIC PLAN

- A LOCKED DOOR W/ ENTRY CONTROL
- B UNLOCKED ENTRY DOOR
- C SECURE TRANSACTION WINDOW
- D LOCKED DOOR W/ ENTRY CONTROL
- E DOOR TO RECEPTION
- - - - -> PATH OF TRAVEL
- SECURITY CHECKPOINT
- WORKSTATION



# West Woods ES – Efficiency Future Ready H&M – McCauley

Construction

## SCHEMATIC PLAN

A LOCKED DOOR W/ ENTRY CONTROL

B SECURE TRANSACTION WINDOW

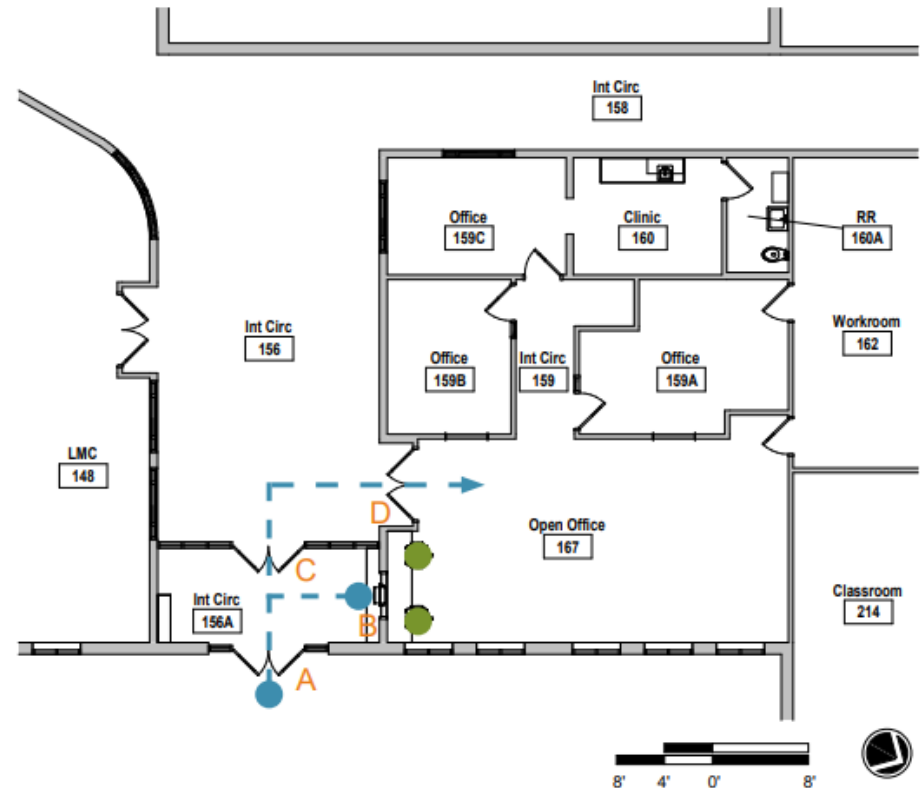
C LOCKED DOOR W/ ENTRY CONTROL

D DOOR TO RECEPTION W/ CARD  
READER

— — — — — PATH OF TRAVEL

● SECURITY CHECKPOINT

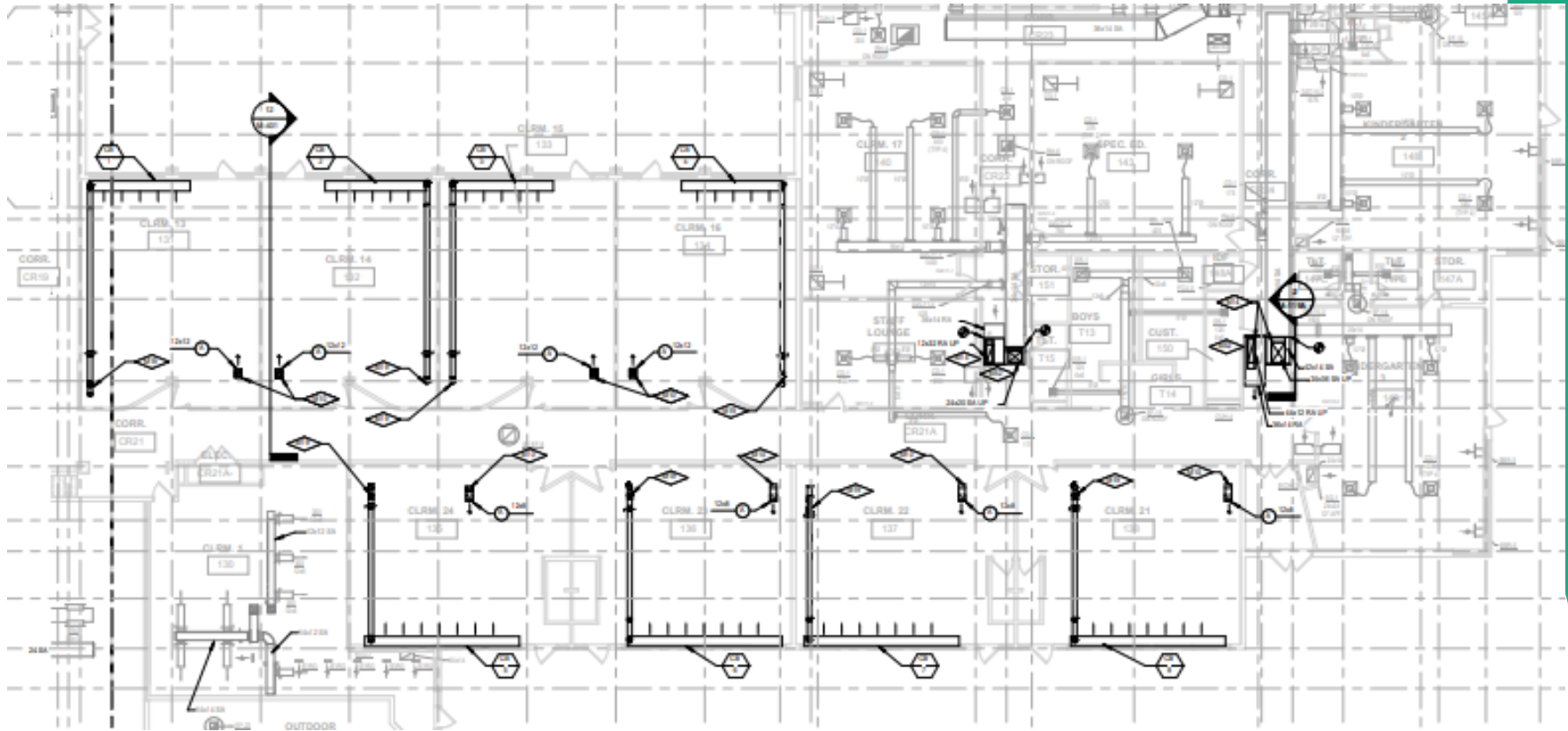
● WORKSTATION





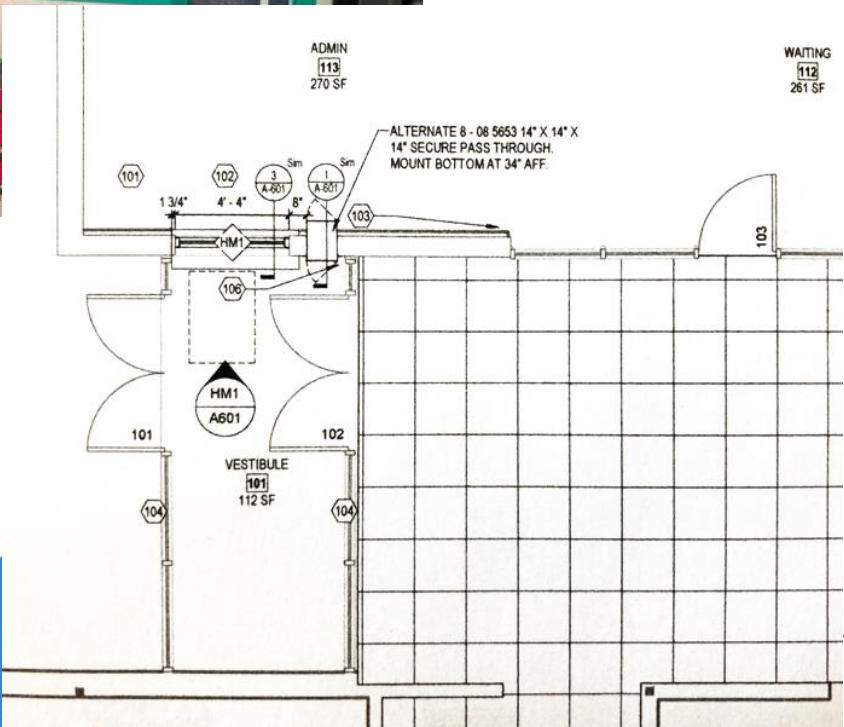
# Fairmount ES – Efficiency Future Ready Eidos / Cator Ruma – GTC

Construction



# Bradford North – Efficiency Future Ready MOA – Mark Young

Construction



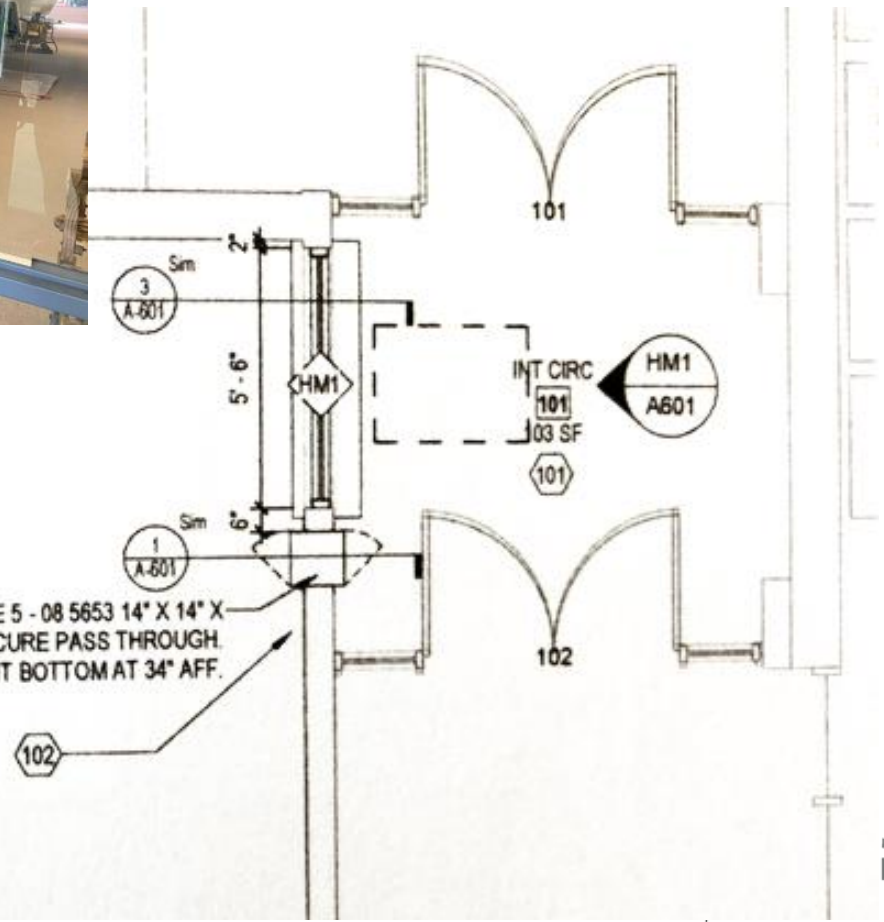
# Bradford South – Efficiency Future Ready MOA – Mark Young

Construction



ADMIN  
104  
308 SF

ALTERNATE 5 - 08 5653 14" X 14" X  
14" SECURE PASS THROUGH.  
MOUNT BOTTOM AT 34" AFF.



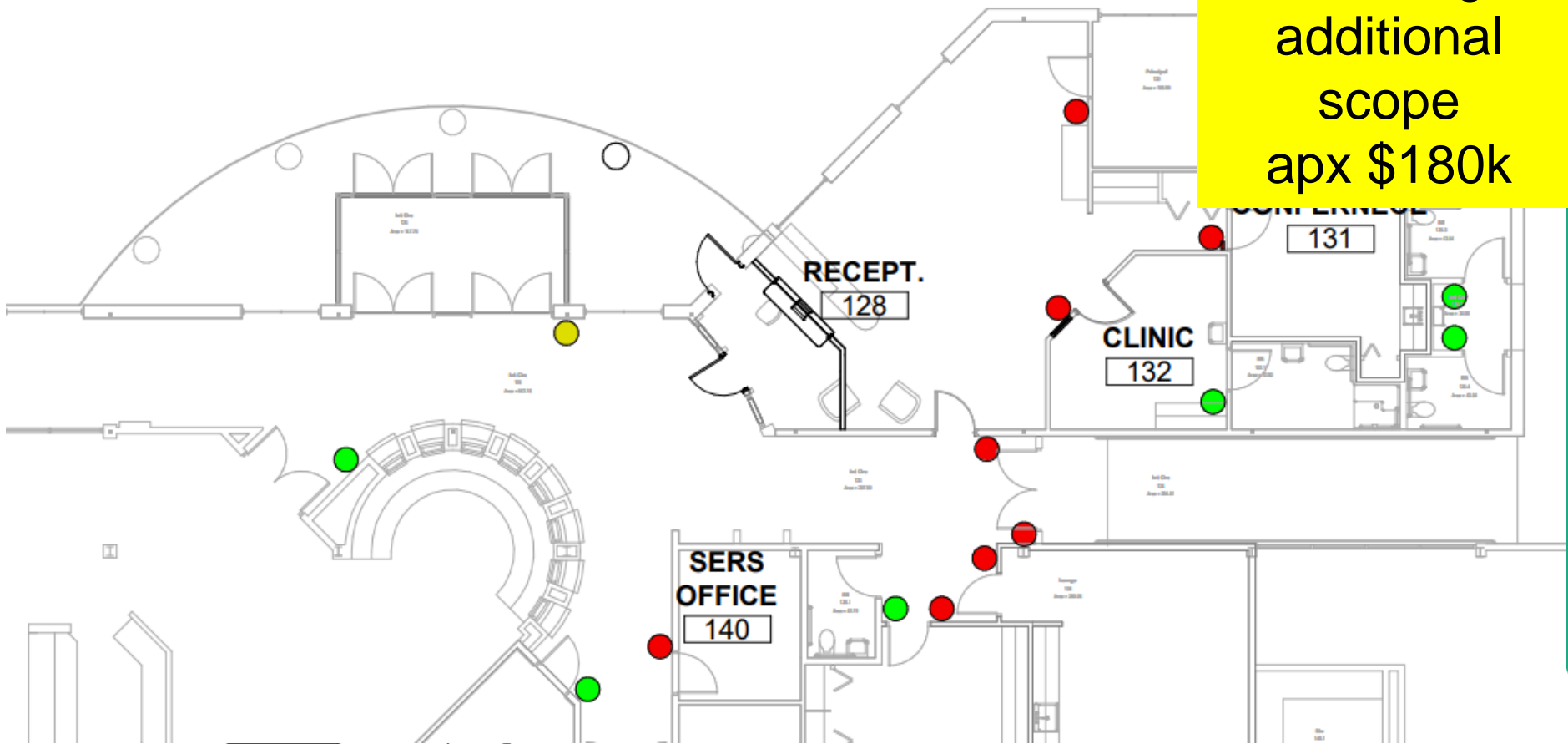


## 15

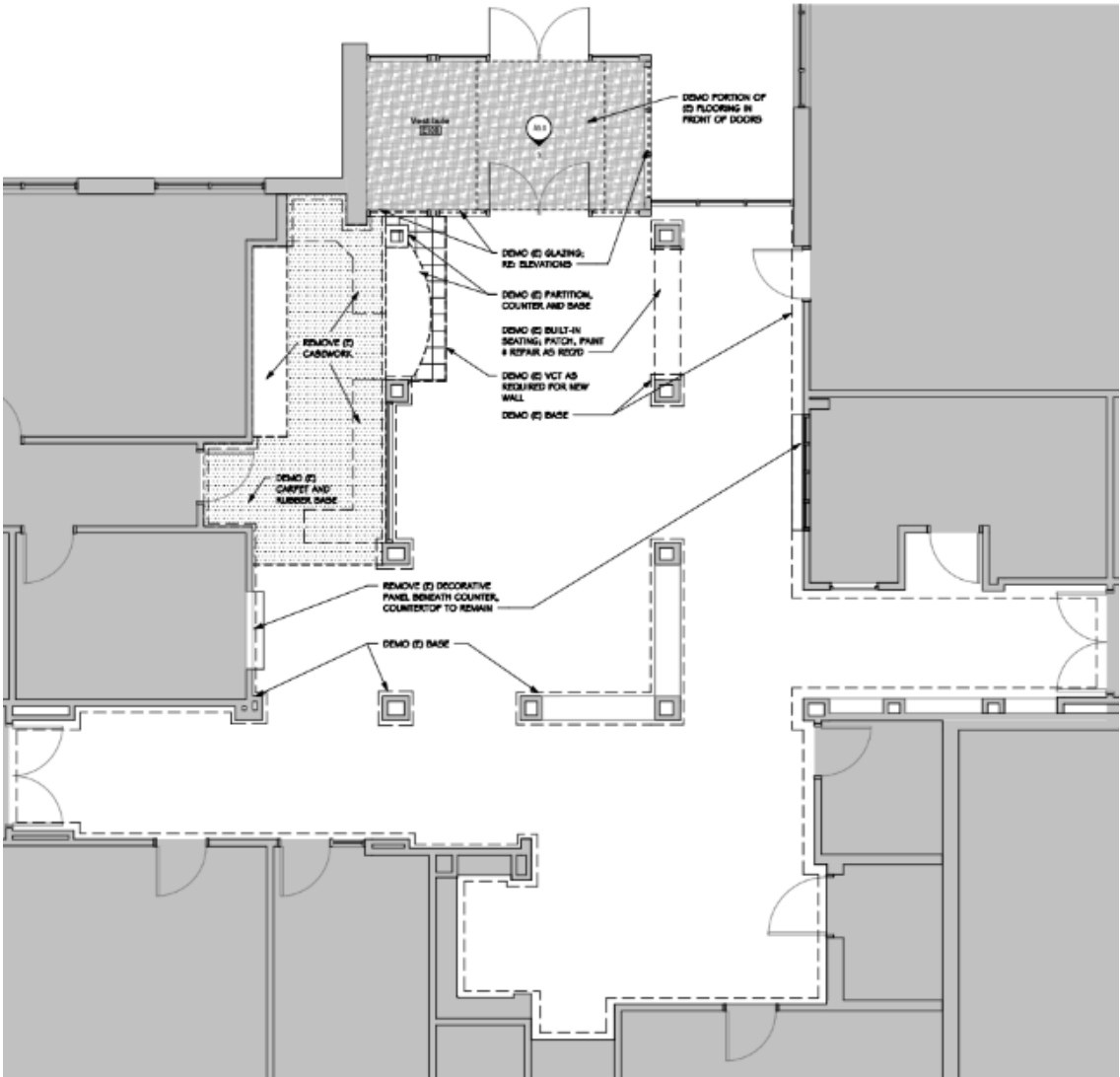
# Free Horizon – Efficiency Future Ready HCM – Single Track

Construction

School  
Funding  
additional  
scope  
apx \$180k



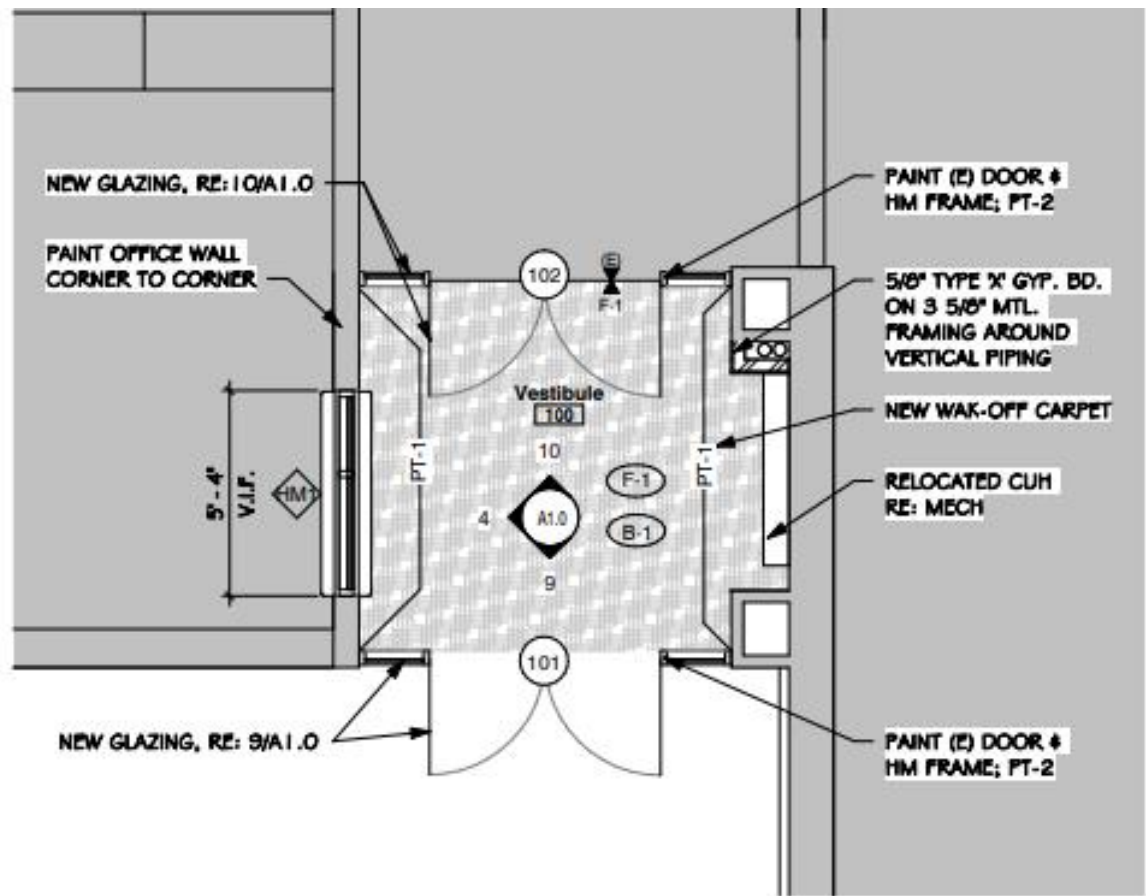
# McLain HS – Efficiency Future Ready Eidos – Single Track





# Rooney Ranch ES – Efficiency Future Ready Eidos – Single Track

Construction



2. Main Level Floor Plan

1/4" = 1'-0"

1'-6"

1'-6"

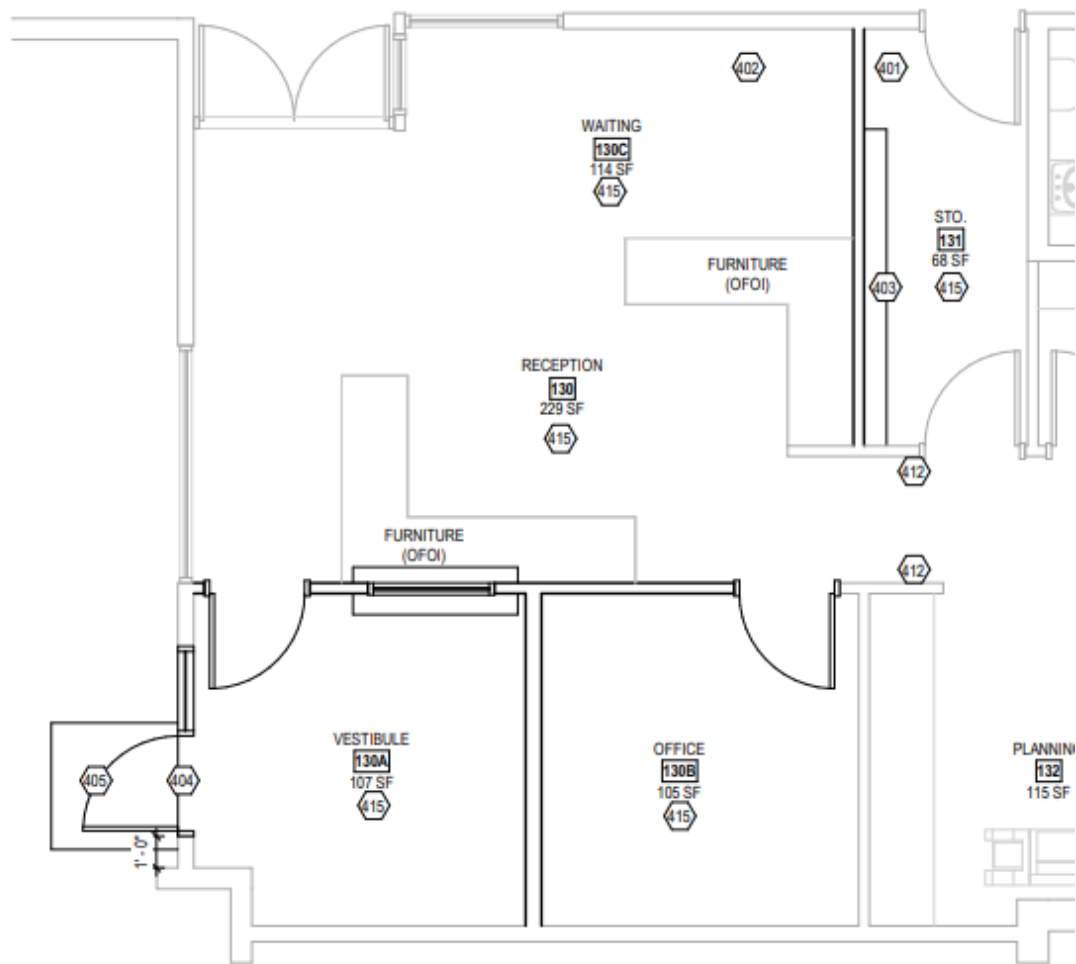


# Construction



# Normandy ES – Efficiency Future Ready MOA – TBD

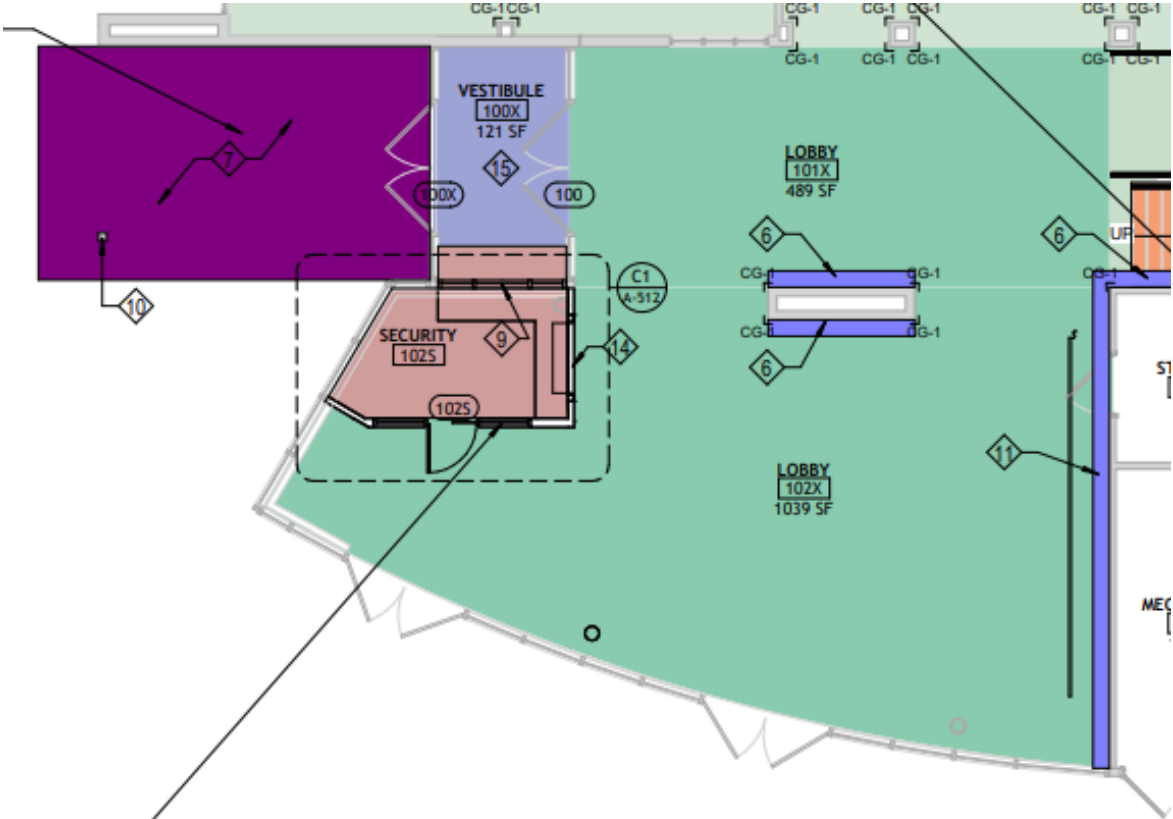
Construction





Warren Tech Central  
Efficiency Future Ready  
HCM – TBD

Bids 3/7



# Security Glass Installation

Adams

Arvada West HS

Bell Middle

Belmar

Bradford North

Bradford South

Deane

Devinny

Evergreen High

Fairmount

Long View High

Lukas

Manning

McLain

Mount Carbon

Elementary

Normandy

Ralston

Elementary

Rooney Ranch

Semper

Three Creek K-8

Wayne Carle MS

West Woods

Elementary

Wilmot



# DW LED 2024 Ackerman



## Construction Documents

1. Alameda International Jr./ Sr.
2. Arvada HS
3. Hackberry Hill Elementary
4. Manning Option School
5. Conifer High
6. Bear Creek High
7. Lakewood High
8. Belmar Elementary
9. Coronado Elementary
10. Jefferson Jr./Sr. High
11. Standley Lake High
12. Lukas Elementary
13. Ralston Valley High
14. Warren Tech North
15. Wayne Carle Middle
16. Dutch Creek Elementary

# FF&E 2024

**Bergen Valley ES FF&E**

**Edgewater ES FF&E**

**Falcon Bluffs MS FF&E**

**Long View HS FF&E** ( )

**South Lakewood ES FF&E**

**Westridge ES FF&E**

**Evergreen HS FF&E**

**Oberon MS FF&E** ( )

**Mandalay MS FF&E**

**Stober MS FF&E**





# 2023 Policy Projects

Regional Opportunities for Thriving Schools – BOE Nov 10, 2022

Capital Investments for Thriving Schools - BOE Jun 08, 2022

Healthy & Equitable Start Times - BOE Mar 03, 2022

# School Closings & Consolidations

Resolution: Board of Education Decision on Staff  
Recommendation Regional Opportunities for Thriving Schools  
Thursday, November 10, 2022

Construction  
Move-In  
March 4

**Stober ES (5CR Addition + Kitchen) LOA & CMGC GTC**



# School Closings & Consolidations

Construction

Resolution: Board of Education Decision on Staff  
Recommendation Regional Opportunities for Thriving Schools  
Thursday, November 10, 2022

**Stober ES (5CR Addition + Kitchen) LOA & CMGC GTC**



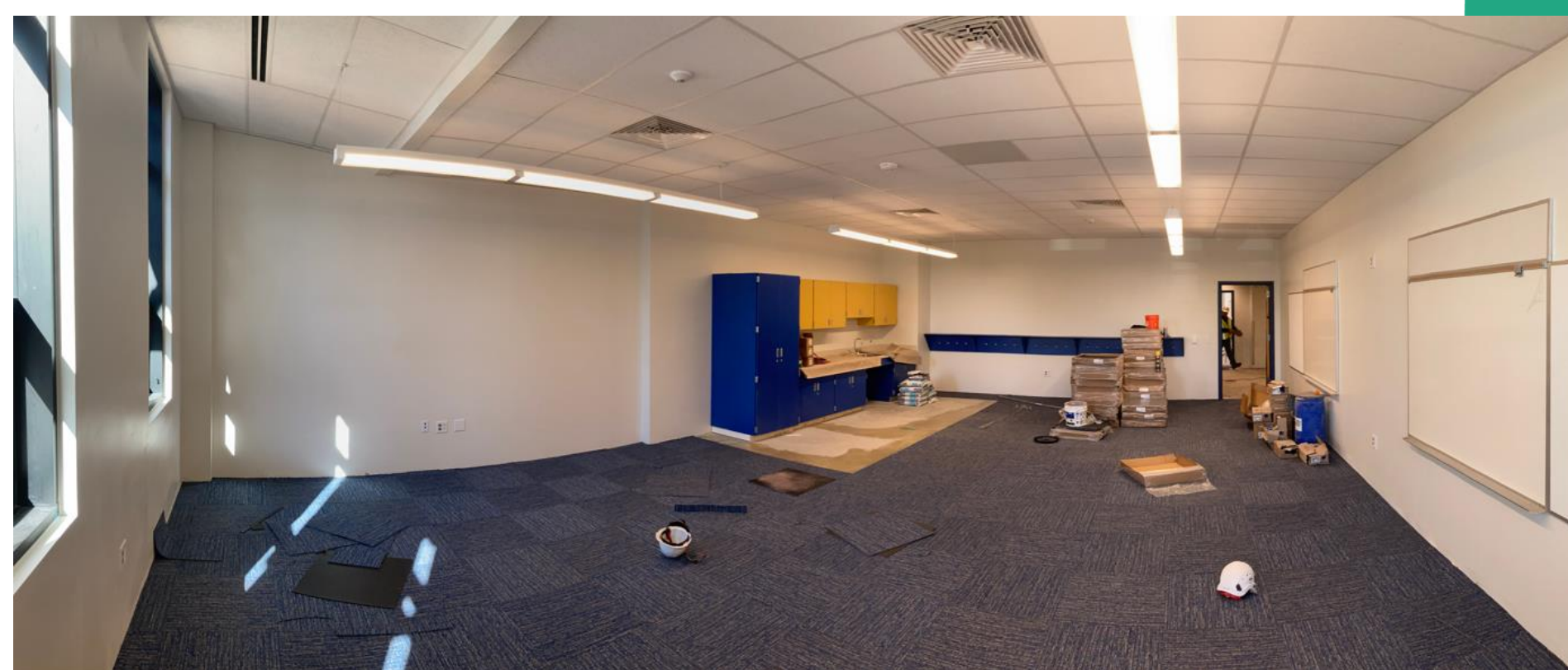


# School Closings & Consolidations

Construction

Resolution: Board of Education Decision on Staff  
Recommendation Regional Opportunities for Thriving Schools  
Thursday, November 10, 2022

**Stober ES (5CR Addition + Kitchen) LOA & CMGC GTC**





# School Closings & Consolidations

Construction

Resolution: Board of Education Decision on Staff  
Recommendation Regional Opportunities for Thriving Schools  
Thursday, November 10, 2022

## Bergen Valley ES - 10 CR - EUA & GC Crossland





# School Closings & Consolidations

Construction

Resolution: Board of Education Decision on Staff  
Recommendation Regional Opportunities for Thriving Schools  
Thursday, November 10, 2022

## Bergen Valley ES - EUA & GC Crossland



## BOE Mar 03 2022

Engineer Ackerman – CMGC Himmelman

# Material Deliveries End of April



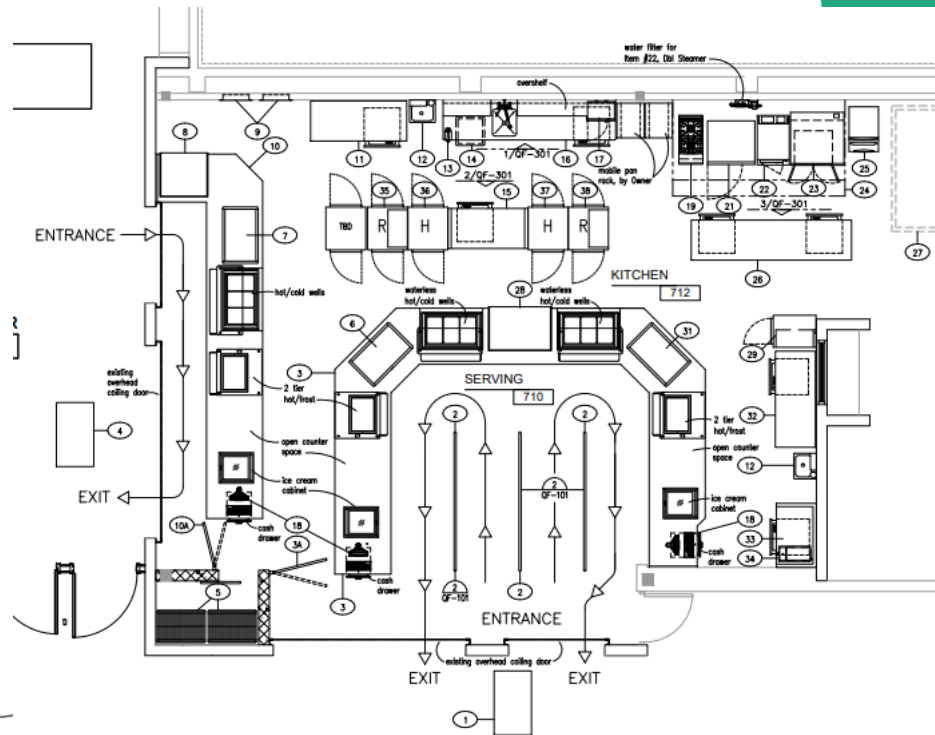
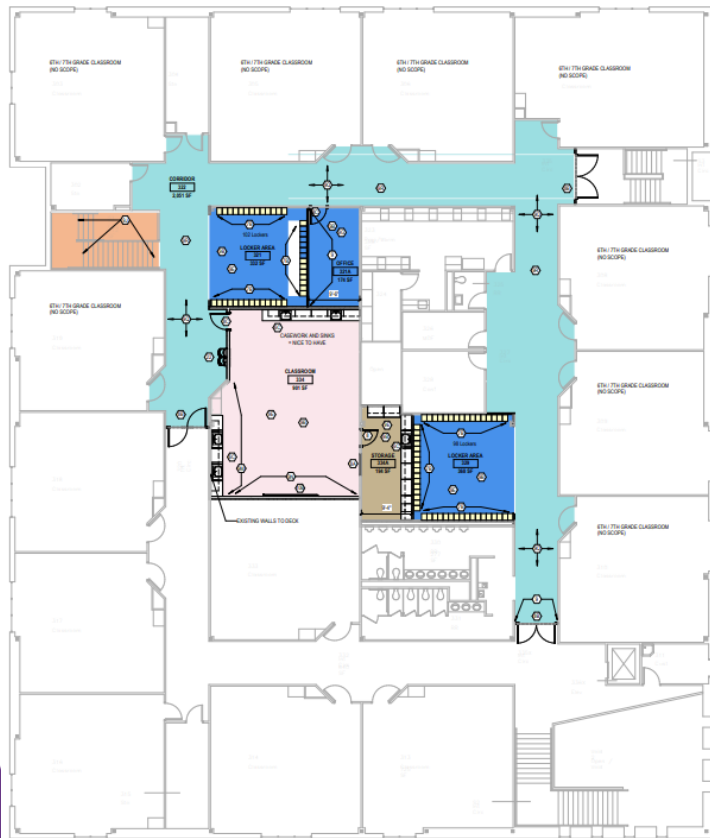


# 6-12 Reconfiguration Pomona HS HCM – Himmelman

BOE Jun 22, 2023 - Regular Meeting

- a. Effective July 1, 2024, Moore Middle School will close; and
- b. The Moore Middle School and Pomona High School boundary attendance areas will be combined; and
- c. Pomona High School will be reconfiguring into a 6-12 school;

Construction  
FNS Funded  
Change Order  
\$642,853  
BOE  
Consent Agenda  
Tonight





# Arvada K-8 Closure Implications North Arvada MS

Construction

## Eidos – SCS

### BOE Oct 12, 2023 – Regular Meeting

Effective July 1, 2024, Arvada K-8 will close and combine its boundary with Lawrence Elementary school for grades K-5 and with North Arvada Middle school for grades 6-8.

### BOE Aug 24, 2023 - Special Meeting- Study/Dialogue Session

Regional Opportunities for Thriving Schools Phase II  
October 12: Board of Education vote. Closure Arvada K8

**North Arvada Middle School - (evaluate apx. 13 rooms)**  
may need minimal, one-time facilities modifications in the range of \$300-500K in order to move existing programs to welcome new boundary students.



# Arvada K-8 Closure Implications Lawrence ES

Construction

## Eidos – Bryan

### BOE Oct 12, 2023 – Regular Meeting

Effective July 1, 2024, Arvada K-8 will close and combine its boundary with Lawrence Elementary school for grades K-5 and with North Arvada Middle school for grades 6-8.

### BOE Aug 24, 2023 - Special Meeting- Study/Dialogue Session

Regional Opportunities for Thriving Schools Phase II  
October 12: Board of Education vote. Closure Arvada K8

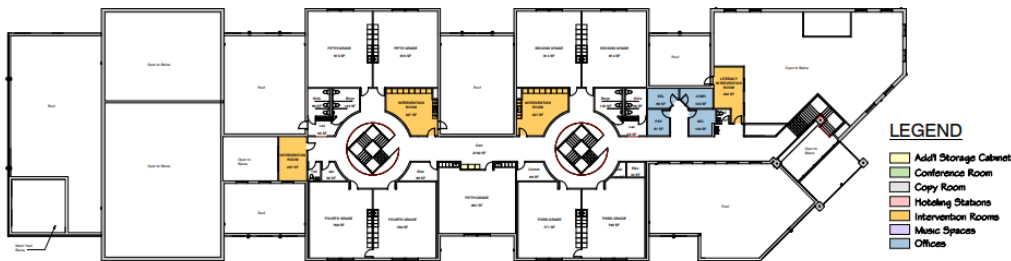
**Lawrence Elementary - (evaluate ap. 14 Rooms / Storage Needs)** may need minimal, one-time, facilities modifications in order to welcome new boundary students, comparable to modifications made to similarly-sized elementary schools welcoming students as part of Phase I of ROFTS at a cost of ~\$675K

Lawrence ES Renovations

October 16, 2023



1. Main Level Floor Plan SD



2. Upper Level Floor Plan SD

#### LEGEND

- Adult Storage Cabinets
- Conference Room
- Copy Room
- Hoteling Stations
- Intervention Rooms
- Music Spaces
- Offices



# Fletcher Miller Special School New Facility @ Current Site

Construction  
Documents

## MOA – GC TBD

BOE Jun 07, 2023 - Special Meeting-Study/Dialogue Session  
Funding TBD Fall 2023





# Fletcher Miller Special School New Facility @ Current Site

Construction  
Documents

## MOA – GC TBD

BOE Jun 07, 2023 - Special Meeting-Study/Dialogue Session  
Funding TBD Fall 2023



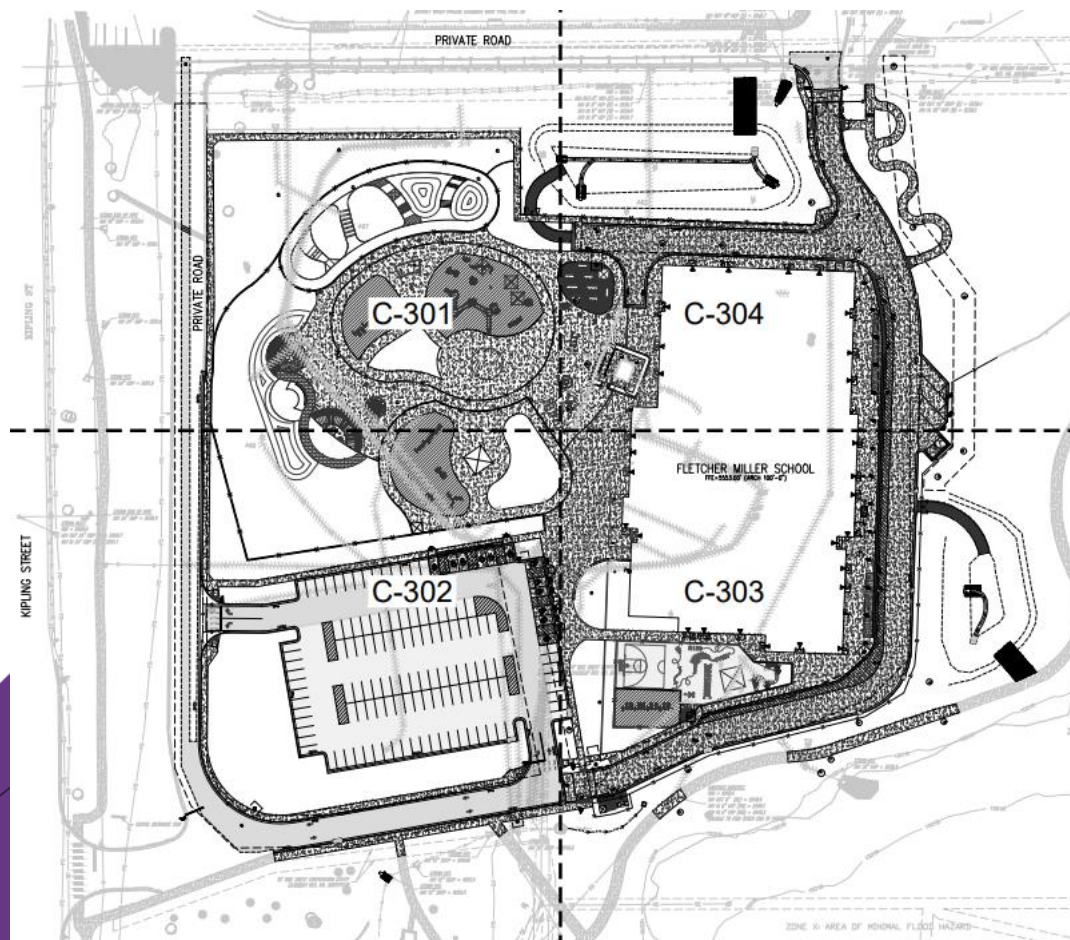


# Fletcher Miller Special School New Facility @ Current Site

## Construction Documents

### MOA – GC TBD

BOE Jun 07, 2023 - Special Meeting-Study/Dialogue Session  
Funding TBD Fall 2023



# Fletcher Miller Special School New Facility @ Current Site

## Construction Documents

### MOA – GC TBD

BOE Jun 07, 2023 - Special Meeting-Study/Dialogue Session  
Funding TBD Fall 2023



# Fletcher Miller Special School New Facility @ Current Site

## Construction Documents

### MOA – GC TBD

BOE Jun 07, 2023 - Special Meeting-Study/Dialogue Session  
Funding TBD Fall 2023



# 2024 General Capital Projects



# Stride Clinic @ Alameda International Jr/Sr High

Grand Opening  
3/4/24

Jordin – Haselden



# DW FA Upgrades (Voice Evac) D'Evelyn & Pomona TLH Fire – Weifield Group

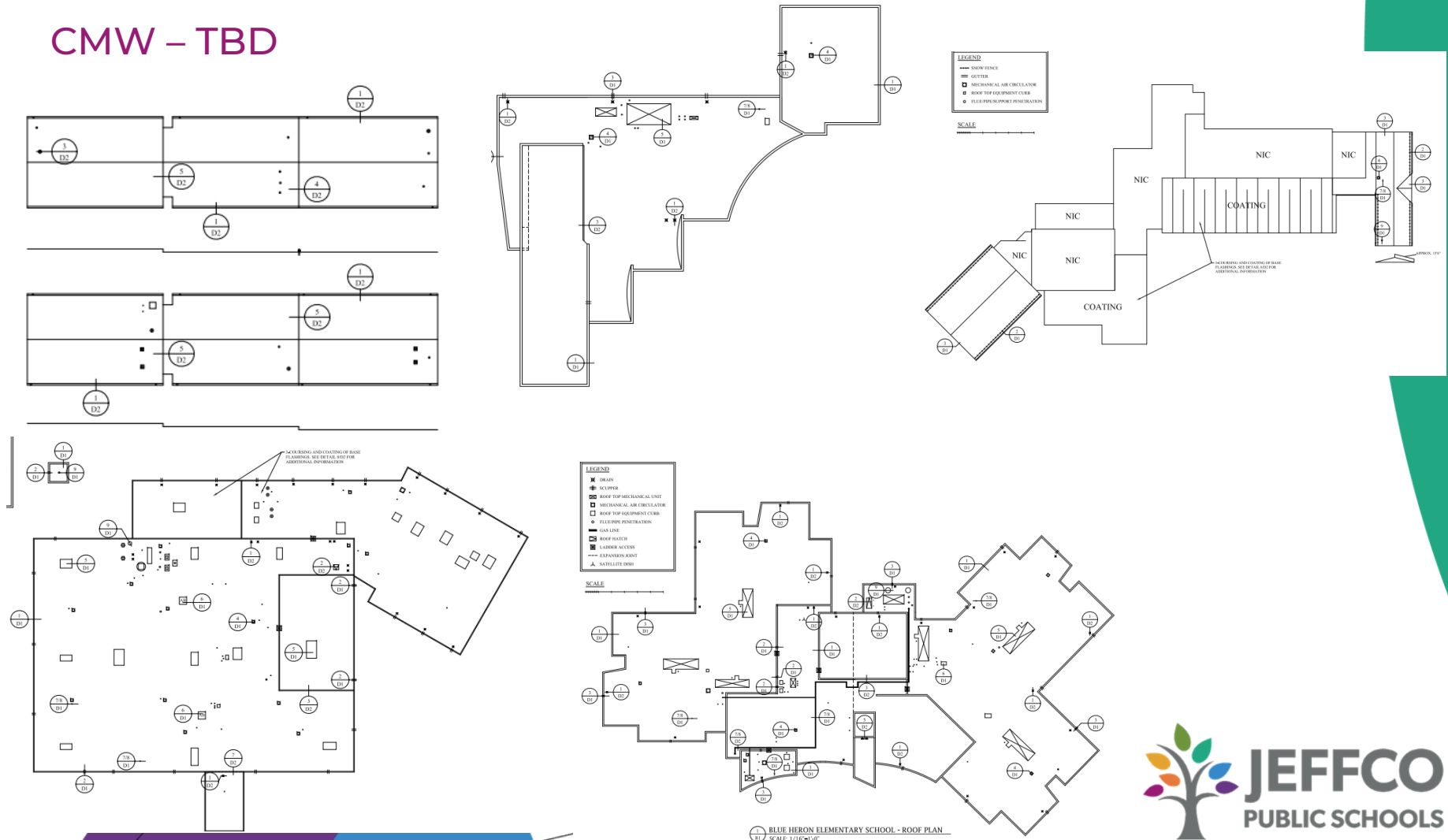
Construction  
Summer 2024



# DW Hail Damage – 5 schools Red Rocks, Columbine HS, Parmalee, Leawood, Blu Heron

Bids 2/15/24

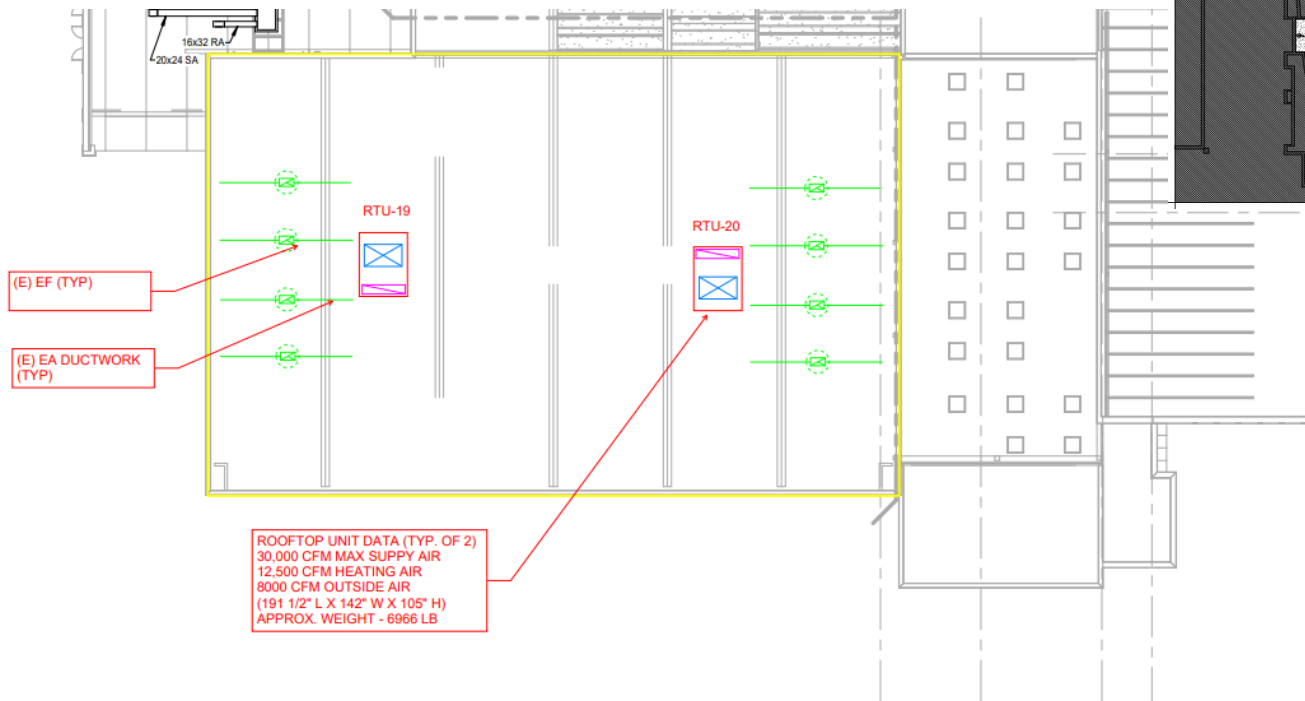
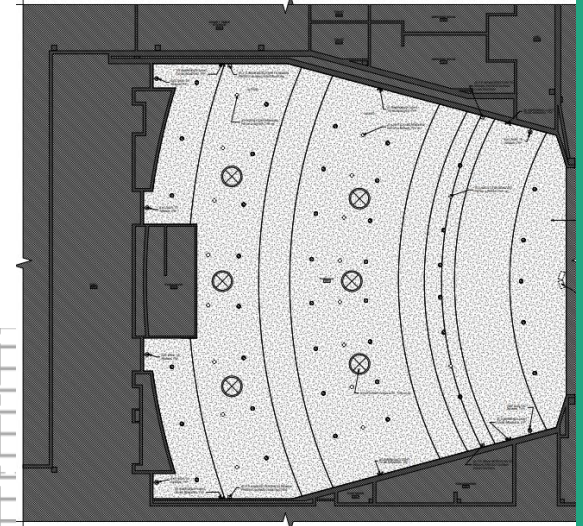
## CMW – TBD



# Alameda HS Gym AHU & Auditorium Air Conditioning

Bids 3/5

Cator Ruma – TBD



OPTION 1: (2) 30K CFM ROOFTOP UNITS



MECHANICAL ROOF PLAN  
SCALE: 1" = 20'-0"



# DW – Fire Department Violations Westminster

Schematic  
Design

Wayne Carle MS (Stage),  
Mandalay MS (Elect Room),  
Standley Lake HS - (West-1<sup>st</sup> & 2<sup>nd</sup> floor sprinklers)

BCER – TBD



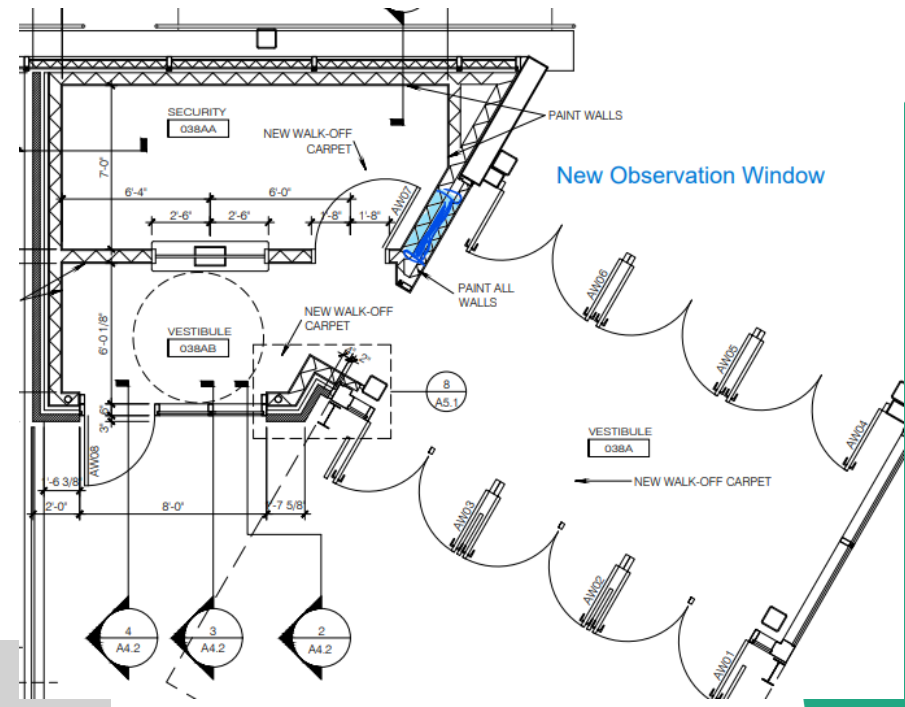
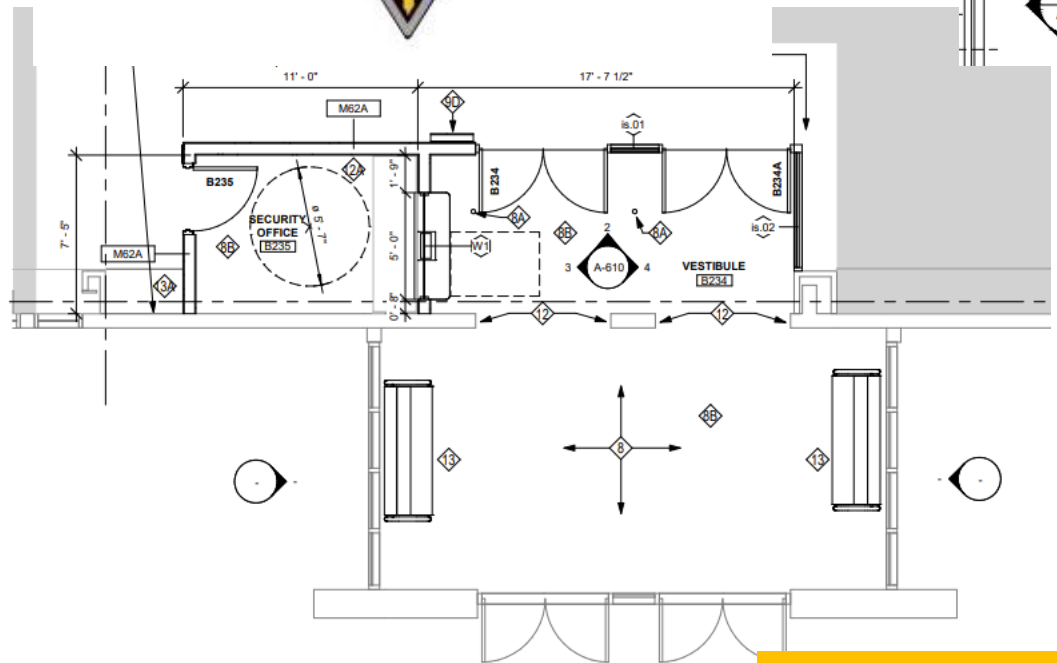
# Trailblazer - Turf Replacement (Failed GMAX Test)

Schematic  
Design

HCM – TBD



Safety and Security



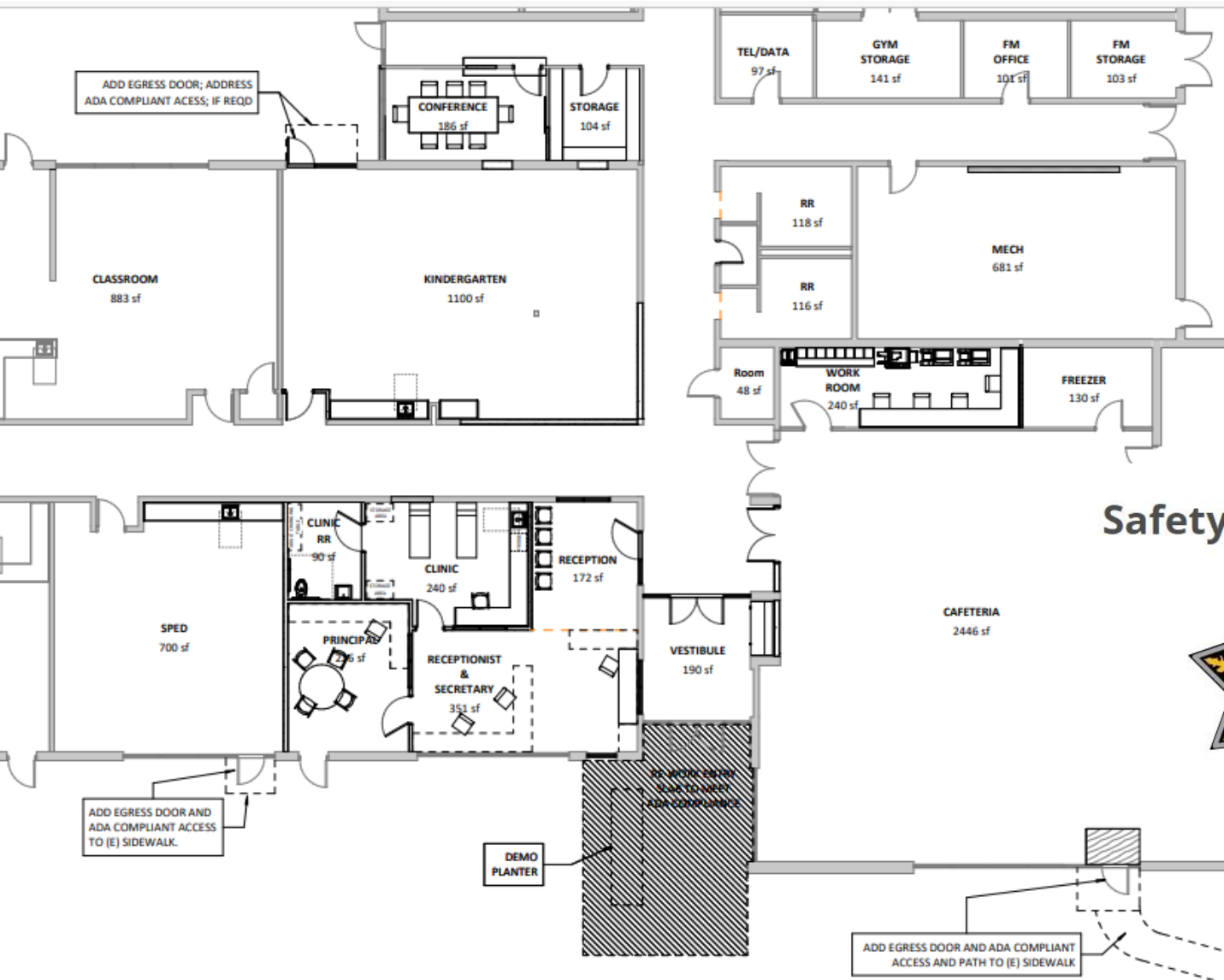
ARVADA WEST HS

# Columbine Hills ES – Secure Entry RB+B – GTC

Bid 2/8  
\$823,700

Estimate  
\$969,266

\$145,566  
Below  
Estimate



Safety and Security





# North Transportation Office Renovation

Pre-Design

TBD – TBD



# Creighton MS East – West Lot Connection

Pre-Design

TBD – TBD



# BOE Construction Agenda Items

## February 15, 2024

Pomona 6-12 Reconfiguration CO FNS – Himmelman \$642,853

# Next Meeting 3/21/24